

Supplemental Environmental Impact Statement for the West Valley Site

Range of Potential Phase 2 Decommissioning Alternatives

No Action Alternative

- Baseline for comparing impacts of the alternatives.
- No further decommissioning actions after Phase 1 completion.
- Continue management and oversight of site facilities for the foreseeable future.
- Conduct periodic maintenance activities during an assumed period of active institutional controls.



Site Envisioned at the End of Phase 1/Beginning of Phase 2

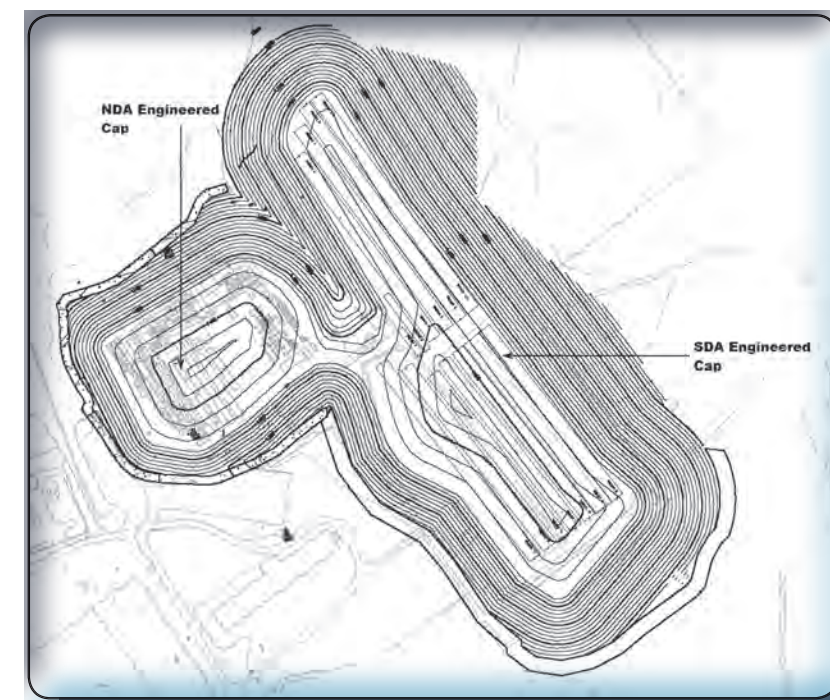
Sitewide Removal Alternative

- Remove site facilities and contaminated soil, sediment, and groundwater to meet criteria for unrestricted release of the Western New York Nuclear Service Center (WNYNSC).
- Characterize radioactive, hazardous, and mixed waste.
- Package the waste and ship it off site for disposal.
- Would require disposition of waste that currently has no offsite disposal location and, as such, would be stored on site until an appropriate offsite facility is available.



Sitewide Close-In-Place Alternative

- Close-in-place most Phase 2 facilities and release large areas of the WNYNSC for unrestricted use.
- Manage major facilities and sources of contamination at their current locations.
- Isolate residual radioactivity in facilities with larger inventories of long-lived radionuclides using special structures and barriers.
- Design such structures and barriers to meet regulatory requirements to retain hazardous and radioactive constituents, resist long-term degradation, and discourage inadvertent intrusion.
- Allow facilities with lesser amounts of contamination to naturally attenuate.
- Requires long-term stewardship.



Hybrid Alternative(s)

- May contain elements of the other alternatives.
- May include complete or partial removal of certain facilities and close-in-place for the remaining facilities.
- Implementation may occur immediately after a decision or after a safe-storage period.



Site Envisioned at the End of Phase 1/Beginning of Phase 2

